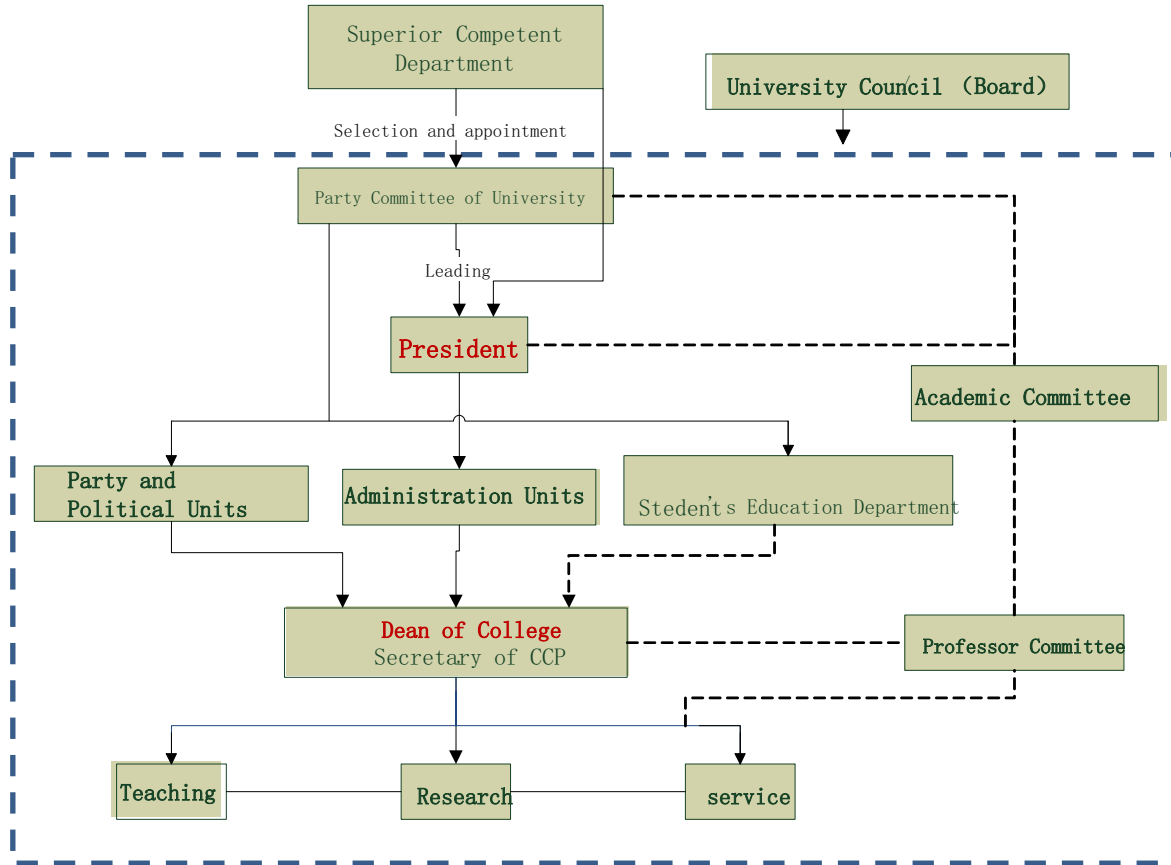


Introduction about Tongji University Governance

Wang Yan



Governance Structure

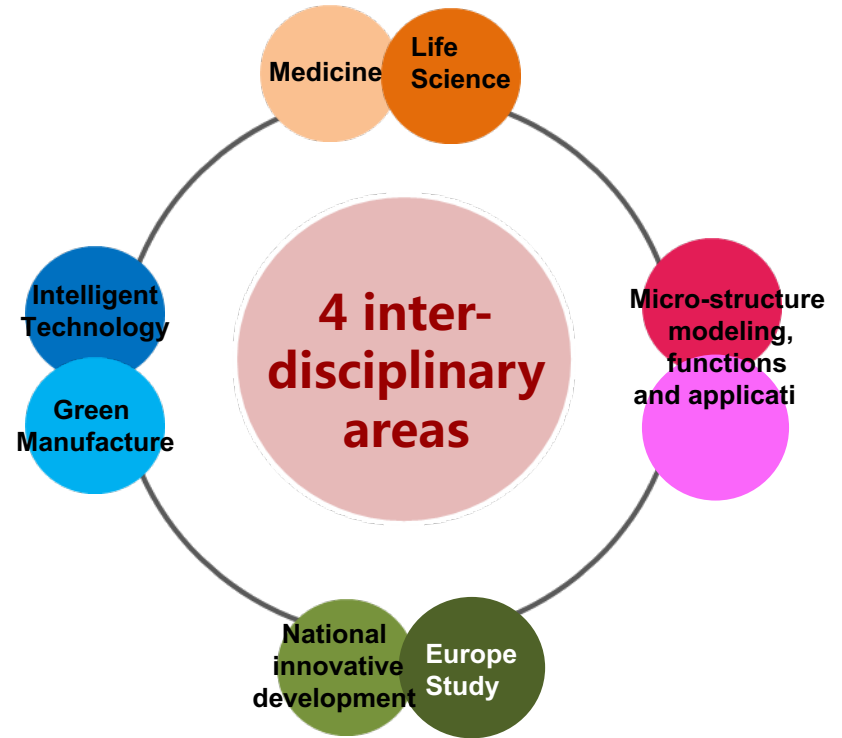
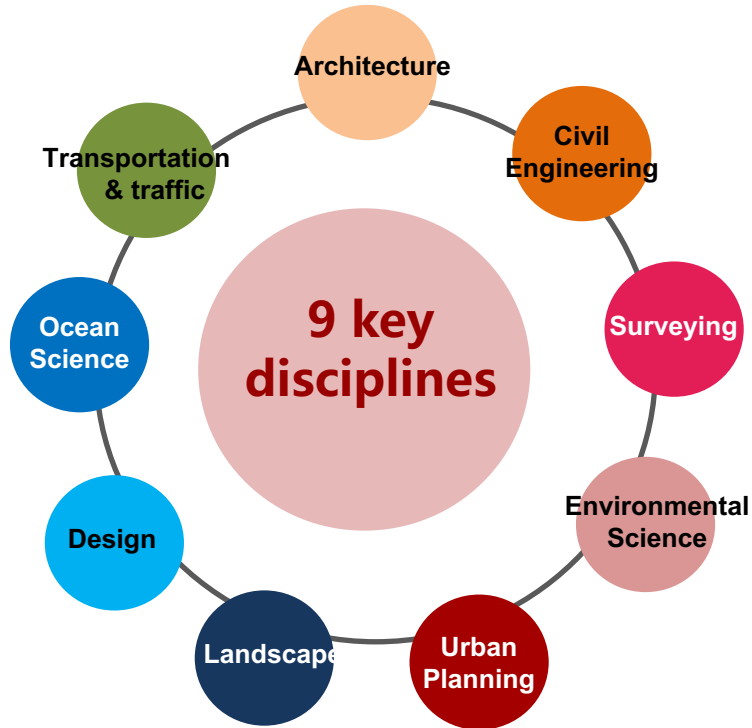


Distribution of Power between College and University level in Tongji

	主体 Main body	预算与财政权 Budget and financial power	学术成员聘任与 晋升权 Academic members' appointment and promotion	房屋与设备 资产权 Housing and equipment assets	招生权 Enrollment	学科与课程 设置权 Subject and curriculum rights	研究决策 权 Research decision- making power
学院层面 College level	executive	B	B	B	B	B	B
	leadership						
	Academic leadership		B			B	B
学校层面 University level	President and administration	A	A	A	A	A	A
	Academic leadership		B			B	B

A means having the final decision-making power, **B** means having part of the decision-making power.

Disciplines in “Double First Class National Strategy”



9 key disciplines and 4 interdisciplinary areas are listed.

**Thank you for
your kind attention!**

