



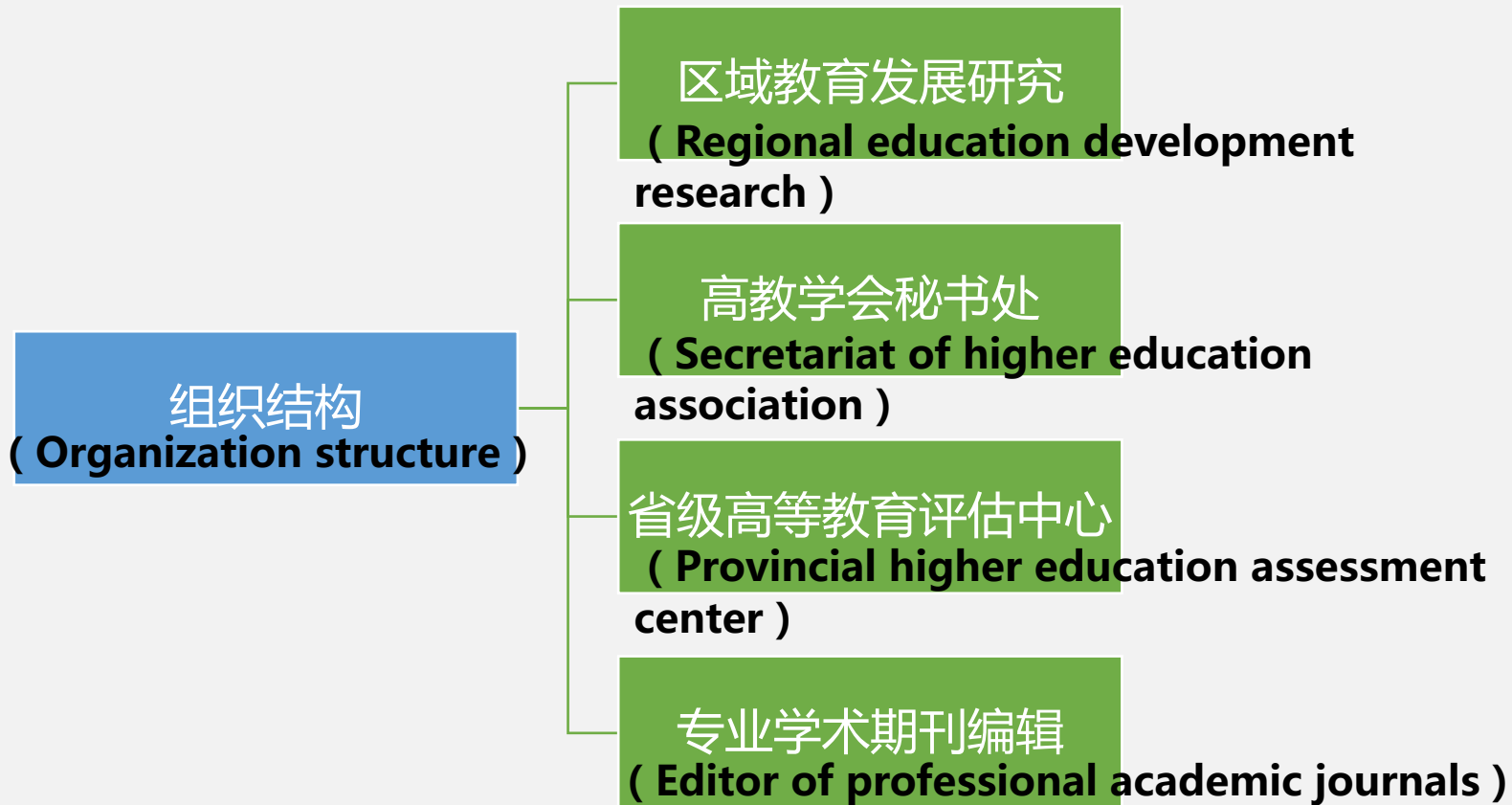
Diversified University Needs Diversified Academic Organization of Higher Education

Wen Sol



云南大学高等教育研究院

Institute of higher education, Yunnan university



主要职能 Primary function

人才培养

Talent
cultivation

培养教育学硕士 (Cultivating master of education)

学科建设

Discipline
construction

获硕士学位、教育硕士专业学位、教育学一级学科学位授权
(Master's degree, master of education professional degree, education first - class discipline degree authorization)

科学研究

Scientific
research

服务地方教育与文化发展, 对重大教育决策及改革事项论证评议, 高教学会组织大型教育研究活动, 评估中心组织省内院校不同类型的质量评估工作
(To serve local education and cultural development, to demonstrate and evaluate major educational decisions and reforms, to organize large-scale educational research activities organized by higher education institutes, and to organize different types of quality evaluation work in provincial colleges and universities)

社会服务

Social
services

学科规模、培养体系、人才培养、研究成果均有显著发展, 为高职高专、政府部门等各领域服务

(Discipline scale, cultivation system, talent cultivation, research results have been significantly developed, for higher vocational colleges, government departments and other fields)

云南大学高等教育研究院

Institute of higher education, Yunnan university



性质
nature

云南大学是一所综合性大学，是云南省唯一一所“双一流”大学建设高校。虽与师范类大学重点建设教育不同，但其综合性质足以引领云南大学教育学科的发展，为省内其它大学高等教育建设提供指引。

(comprehensive university, the only “double first-class” university in Yunnan . Leading the development of educational disciplines and providing guidance for the construction of higher education.)

特点
characteristic

从复合型教研职能担当，到高学历师资构成，再到成果学术影响，为地方教育发展与改革提供服务，在全国范围内独树一帜，不可替代。

(From the composite teaching and research function, to the composition of highly educated teachers, and then to the academic impact, to provide services for the development and reform of local education.)

云大高教院SWOT分析

SWOT Analysis:Institute of higher education, Yunnan university

<div>外部因素 External factors</div> <div>内部因素 Internal factors</div>	<div>S (Strength)</div> <ul style="list-style-type: none"> • 综合性 (Comprehensive) • “双一流” ("Double First-Class") • 复合型教研职能 (Compound teaching and research function) • 高学历师资队伍 (Highly educated faculty) 	<div>W (Weakness)</div> <ul style="list-style-type: none"> • 各学科发展建设不均衡 (Various disciplines are unbalanced) • 容易忽视师范教育 (Teacher education is easy to ignore) • 教育基础设施不受重视 (Infrastructure is not valued) • 教育类师资力量不足 (Lack of teachers for education)
<div>O (Opportunity)</div> <ul style="list-style-type: none"> • 建设“双一流”大学的关键时期 (The key period of constructing "double first-class" universities) • 中国高等教育即将进入普及化阶段 (China's higher education is about to enter the stage of popularization) • 公众对高学历要求上升 (Public demand for higher education is rising) • 积极响应国家出台的相关政策 (Actively respond to relevant national policies) 	<div>SO</div> <ul style="list-style-type: none"> • 承担“双一流”建设任务，提高质量，明确特色 (To undertake the task of "double first-class" construction, improve quality, clear characteristics) • 提升学术科研水平，以适应社会需求 (To enhance the level of academic research to meet social needs) 	<div>WO</div> <ul style="list-style-type: none"> • 重视多学科协调发展 (To attach importance to coordinated development of multiple disciplines) • 提高对高等教育的重视程度 (To pay more attention to higher education) • 扩大高学历师资队伍数量 (To expand the number of highly educated teachers) • 加强基础设施建设 (To strengthen infrastructure development)
<div>T (Threat)</div> <ul style="list-style-type: none"> • 各“双一流”大学开放竞争 (The "double-top" universities are open to competition) • 高等教育还未有一个完整的独立体系 (Higher education has not had a complete independent system) • 对高等教育经费投入还有所欠缺 (Funding for higher education remains inadequate) 	<div>ST</div> <ul style="list-style-type: none"> • 明确自身定位，特色发展 (To clear self-positioning, characteristic development) • 利用已有的基础设施建设发展高等教育 (To use the existing infrastructure to develop higher education) • 将国家经费合理投入建设教育 (To invest state funds in education appropriately) 	<div>WT</div> <ul style="list-style-type: none"> • 开放竞争可激发建设活力 (To open competition can stimulate the vitality of construction) • 加大对教育的资金投入 (To increase funding for education) • 多学科建设引导特色发展 (Multidisciplinary construction guides characteristic development)

云南师范大学教育学部 YNNU faculty of education



云南师范大学教育
学部组织结构
Organization
structure

党群部门
Party-mass department

党组织
Party organization

团委
Youth League committee

工会 The work union

行政机构
Administrative agencies

管理服务机构
Management service organization

教学机构
Educational organization

教辅机构
Teaching institutions

实体科研机构R
Research institutions

综合交叉平台
Integrated cross platform

专门委员会
Special
committee

实体科研机构

Physical research institutions

云南省教育科学研究所

Yunnan institute of education science

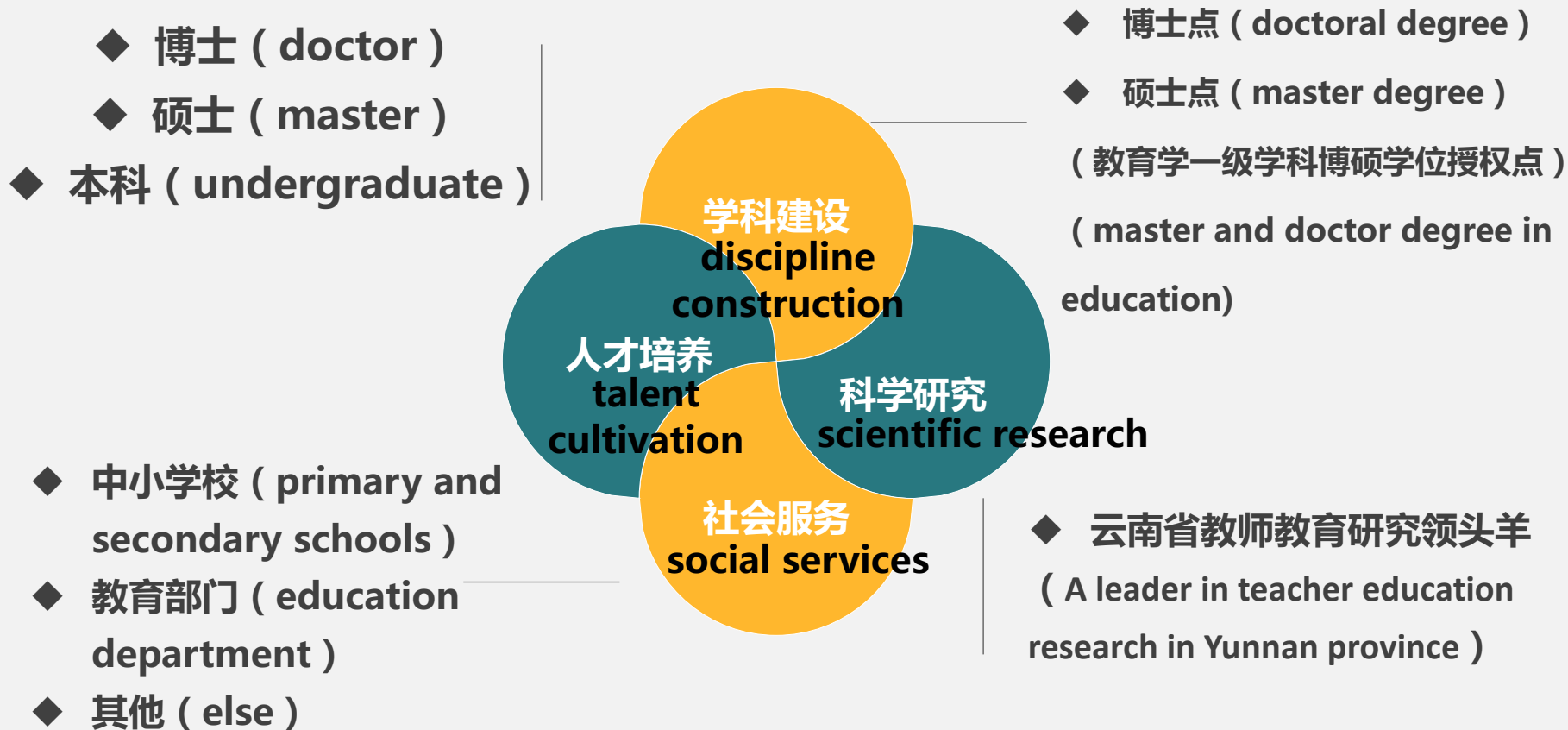
民族教育信息化教育部重点实验室

**Key laboratory of information technology in ethnic
education, Ministry of Education**

高等教育与区域发展研究院

Institute of higher education and regional development

主要职能 Primary function



性质特点 nature and characteristic

- ◆ 云南省唯一的师范类大学
(The only normal university in Yunnan province)
- ◆ 省内教师培育的“龙头”
(“ Leading role ” of teacher cultivation in Yunnan province”)
- ◆ “红土高原上的教师摇篮”
(“Cradle of teachers on the red earth plateau”)



云师大教育学部SWOT分析

SWOT analysis :YNNU faculty of education

<div>外部因素 External factors</div> <div>内部因素 Internal factors</div>	<div>S (Strength)</div> <ul style="list-style-type: none"> 师范类大学 (Normal university) 教师教育研究处于省内龙头领先地位 (Teacher education research is in the leading position in the province) 在全国省属师范院校中影响力高 (Higher influence in the national provincial normal universities) 教育科研成果显著 (Remarkable achievements have been made in educational research) 	<div>W (Weakness)</div> <ul style="list-style-type: none"> 学生数量多, 但质量难以上升 (The number of students is large, but the quality is difficult to rise) 过于侧重师范教育, 容易忽视其他学科发展 (Too much emphasis on teacher education, easy to ignore the development of other disciplines) 教育专业数量多, 水平有待提高, 管理有待规范 (The number of education majors is large, the level needs to be improved and the management needs to be standardized)
<div>O (Opportunity)</div> <ul style="list-style-type: none"> 响应教育是“国之大计”、“党之大计” (Responding to education is "the great plan of the country" and "the great plan of the party") 积极推动教育队伍建设 (Actively promote the development of the educational workforce) 师范类毕业生需求量大 (Normal graduates are in high demand) 	<div>SO</div> <ul style="list-style-type: none"> 发挥师范类大学的优势 (To Give full play to the advantages of normal universities) 为省内相关高校教师教育建设提供指引 (To provide guidance for the construction of teachers' education in related universities in the province) 	<div>WO</div> <ul style="list-style-type: none"> 重视师范类学生质量培养 (To attach importance to the quality training of normal students) 以教育学为侧重, 全面协调发展各学科 (To focus on pedagogy, comprehensive and coordinated development of various disciplines)
<div>T (Threat)</div> <ul style="list-style-type: none"> 各师范类大学激烈竞争 (The normal universities compete fiercely) 地处云南, 地理位置相对较偏 (Located in Yunnan, the geographical position is relatively partial) 与国际化接轨日益加剧, 竞争激烈 (With the internationalization of increasingly intensified competition) 	<div>ST</div> <ul style="list-style-type: none"> 发挥区域优势, 面向全国, 辐射东南亚 (To give play to regional advantages, face the whole country, radiate southeast Asia) 加强与国外特别是南亚东南亚相关高校联系, 推动协同发展 (To strengthen ties with foreign universities, especially those in south and southeast Asia, and to promote coordinated development) 	<div>WT</div> <ul style="list-style-type: none"> 以保学生数量推动质量提升 (To ensure the number of students to promote quality improvement) 提高高等教育的国际竞争力 (To enhance the international competitiveness of higher education) 借鉴国外优秀经验 (To learn from the excellent experience of foreign countries)

昆明理工大学高等教育研究所

Department of higher education, Kunming university of science and technology

组织
结构

Organization
structure

下设校内编辑部，编制内部刊物，专业学术期刊编辑。

(editorial department of internal journals)

主要
职能

Primary function

- ◆ 科学研究：编制校内刊物，进行学术研究和交流，取得众多标志性成果。（ Scientific research: To compile the university journals, conduct academic research and exchanges, and achieved many landmark results. ）
- ◆ 社会服务：为校内高教发展提供规划与咨询服务。（ Social services: provide planning and consulting services for the university development of higher education. ）

昆明理工大学高等教育研究所

Department of higher education, Kunming university of science and technology

性质
nature

昆明理工大学是一所以工为主，理工结合的大学，但其对教育教学的重视程度同样毫不偏废，为昆工多学科协调发展提供有力支撑。

Based on engineering and integrated with science and technology, providing strong support for the coordinated development of Kunming and engineering in multiple disciplines.

特点
characteristic

侧重教育科学研究与校内社会服务。编辑专业学术期刊，为高校发展提供明确指引。未来学术力量不断壮大，为其它理工类大学的教育学科发展开启先导。

Focus on educational science research and campus social services. Edit professional academic journals. In the future, the growing academic force will be the forerunner for the development of educational subjects.

昆工高教所SWOT分析

SWOT analysis: department of higher education, Kunming university of science and technology

<div>外部因素 External factors</div> <div>内部因素 Internal factors</div>	<div>S (Strength)</div> <ul style="list-style-type: none"> • 学校办学规模大 (The school has a large scale) • 办学层次与类别齐全 (School levels and categories are complete) • 重视教学研究与社会服务 (Emphasis on teaching research and social services) • 编辑教育类专业学术内刊 (Edit academic journals of educational majors) 	<div>W (Weakness)</div> <ul style="list-style-type: none"> • 容易忽视教师教育 (It is easy to neglect teacher education) • 教师教育设施薄弱 (Teacher education facilities are weak) • 教师教育队伍建设不足 (The construction of teacher education team is insufficient)
<div>O (Opportunity)</div> <ul style="list-style-type: none"> • 与国际交流合作日益密切 (Increasingly engaged in international exchanges and cooperation) • 面向东南亚，吸引各类人才 (Face southeast Asia, attract all kinds of talent) 	<div>SO</div> <ul style="list-style-type: none"> • 明确理工类大学的定位 (To define the orientation of science and engineering universities) • 充分发挥多学科协调发展的优势 (To give full play to the advantages of multidisciplinary coordinated development) • 积极提高学术科研水平 (To raise the level of academic research actively) 	<div>WO</div> <ul style="list-style-type: none"> • 今后可加入人才培养与学科建设，完善教育发展 (In the future,Educational talents training and discipline construction can be added to improve the development of education) • 加大对基础设施建设的经费投入 (To increase spending on infrastructure) • 吸取国外优秀经验 (To absorb excellent experiences from abroad)
<div>T (Threat)</div> <ul style="list-style-type: none"> • 各理工类大学强烈竞争 (Universities of science and technology are strongly competitive) • 未入选“双一流”，其发展与云大竞争处于劣势 (Not selected "double first-class ", its development is at a disadvantage in competition with Yunnan university) • 划归地方后，其财政投入相当不足 (Its financial input is quite insufficient after being assigned to the local government) 	<div>ST</div> <ul style="list-style-type: none"> • 突出自身学科建设特色 (To highlight their own discipline construction characteristics) • 学习师范类大学教育学科建设经验，加强学科融合 (To Learn experiences of education subject construction from normal university and to strengthen subject integration) • 提高教师教育建设经费 (To Increase funding for teacher education) 	<div>WT</div> <ul style="list-style-type: none"> • 重视理工类大学教育研究 (To pay attention to the education research of science and engineering university) • 加大教师教育资金投入 (To increase funding for teacher education)

三个不同类型教育学术组织SWOT分析比较

Comparison of three different cases' SWOT analysis

云大高教院

Institute of higher education, Yunnan university

发挥综合性大学的优势，克服对教师教育忽视的缺陷，利用好目前“双一流”大学建设的关键时期，规避师范教育不受重视的风险。

They should give full play to the advantages of comprehensive universities, overcome the defects of neglecting teacher education, make good use of the current critical period of the construction of "double first-class" universities, and avoid the risk that teacher education is not paid attention to.

云师大教育学部

YNNU faculty of education

作为云南省唯一的师范类大学，应有效利用国家对教师教育重视这一重大决策，积极响应国家的教师教育政策，提升云师大在全国师范类大学的地位，利用地理优势，加快国际化步伐。

As the only normal university in yunnan province, we should effectively take advantage of the important decision of the state regarding teacher education, actively respond to the national teacher education policy, enhance the status of yunnormal university in the national normal university, take advantage of geographical advantages, and accelerate the pace of internationalization.

昆工高教所

Department of higher education, Kunming university of science and technology

利用理工类大学的优势，加强重视教师教育，面向东南亚，大量引进人才，规避对教师教育的忽视。

They should take advantage of the advantages of science and engineering universities, pay more attention to teacher education, face southeast Asia, introduce a large number of talents, avoid the neglect of teacher education.



结论 conclusion

通过对云南省三所不同类型、不同层次大学高等教育学术机构的跨案例分析，可以得出：大学高教学学术机构中不同组织结构发挥着不同的功能，体现了不同的学术领导力及社会影响力。

Through the cross-case study of three higher education academic organizations of different types and levels in Yunnan province, it can be concluded that different organizational structures in higher education academic organizations play different functions and reflect different academic leadership and social influence.



谢谢您的欣赏

**Thank you for your
appreciation**